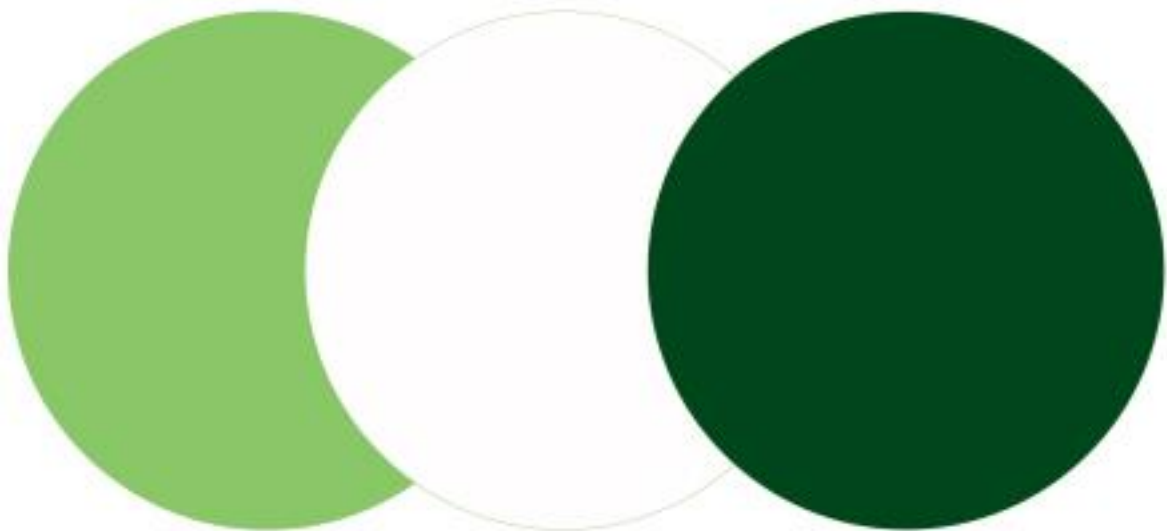


Casella Firmware Upgrade Guide

Casella 35x dBadge

PROC: 350 Rev 5a.



Introduction

This guide is intended to guide a user through the necessary steps to update the firmware on a Casella 35x dBadge and describes each process in a step by step manner. In order to update the firmware on the Casella 35x dBadge, the **dBadge Firmware Upgrade Program** needs to be installed on your computer; this program is available to download from the Casella website within the Casella 35x dBadge product support page.

If assistance is needed during any process in this guide, support can be attained online from **helpdesk.casellasolutions.com** or by calling **+44 (0)1234 84779**.

***N.B** Updating the firmware on your Casella 35x dBadge may erase all the information stored in the unit. Please make sure you have backed up your data before attempting this procedure.*

Contents

Software Installation.....	Page 3
Equipment Needed.....	Page 4
Firmware Upgrade Method.....	Page 5
Firmware Change Notes	Page 8

The latest firmware revision can be downloaded from the Casella website within the relevant product support page. If a new firmware version is available, a technical notification will be released by Casella Product Support. The up to date revision will then be uploaded to the Casella website for download.

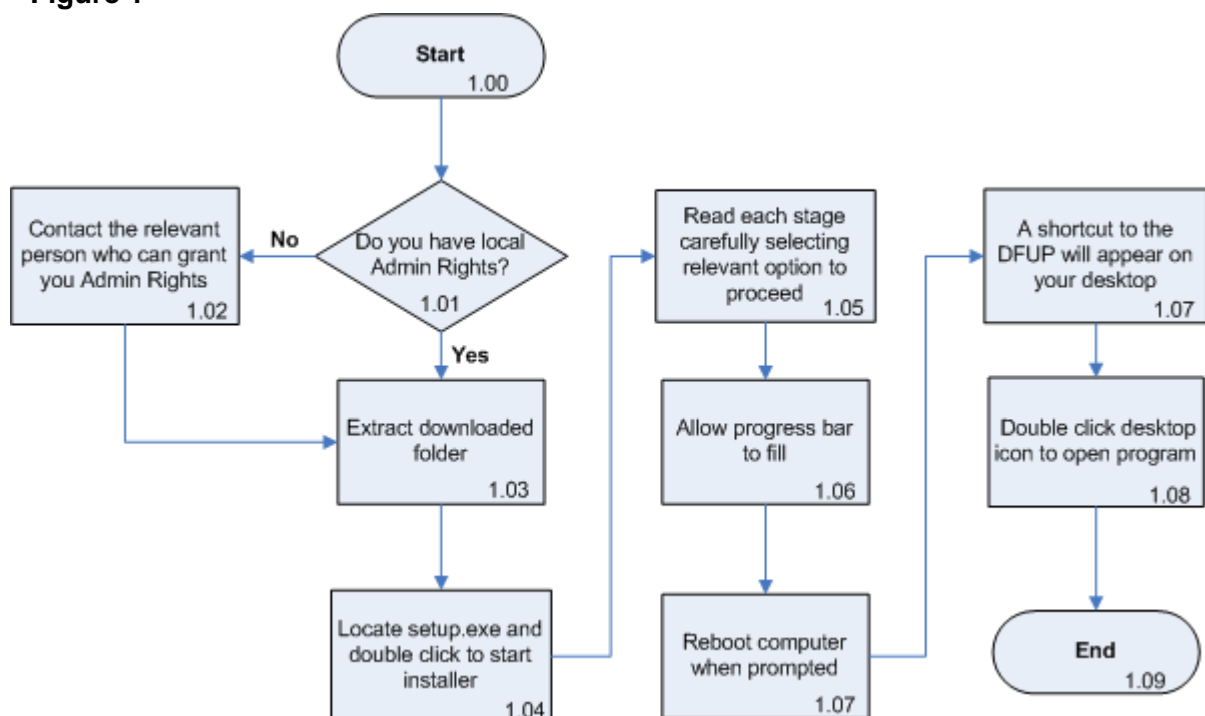
Software Installation

The dBadge Firmware Upgrade Program has been specifically written by Casella to update the firmware on the Casella 35x dBadge. The software is available for download from the Casella website. Installation of the dBadge Firmware Upgrade Program is very simple with the steps outlined below in **Figure 1**.

The minimum system requirements to use this program are shown below:

- PC with a 1GHz Intel or AMD processor
- 512 mb of RAM
- Windows Vista, Windows 7 or Windows 8 (requires dotNET 3.5 Framework)
- An Internet connection for software download
- A working USB 2.0 port for instrument connection

Figure 1



Equipment

Before proceeding with the firmware update process, please make sure you have the following equipment:

Casella 35x dBadge



USB Infra-red Dongle

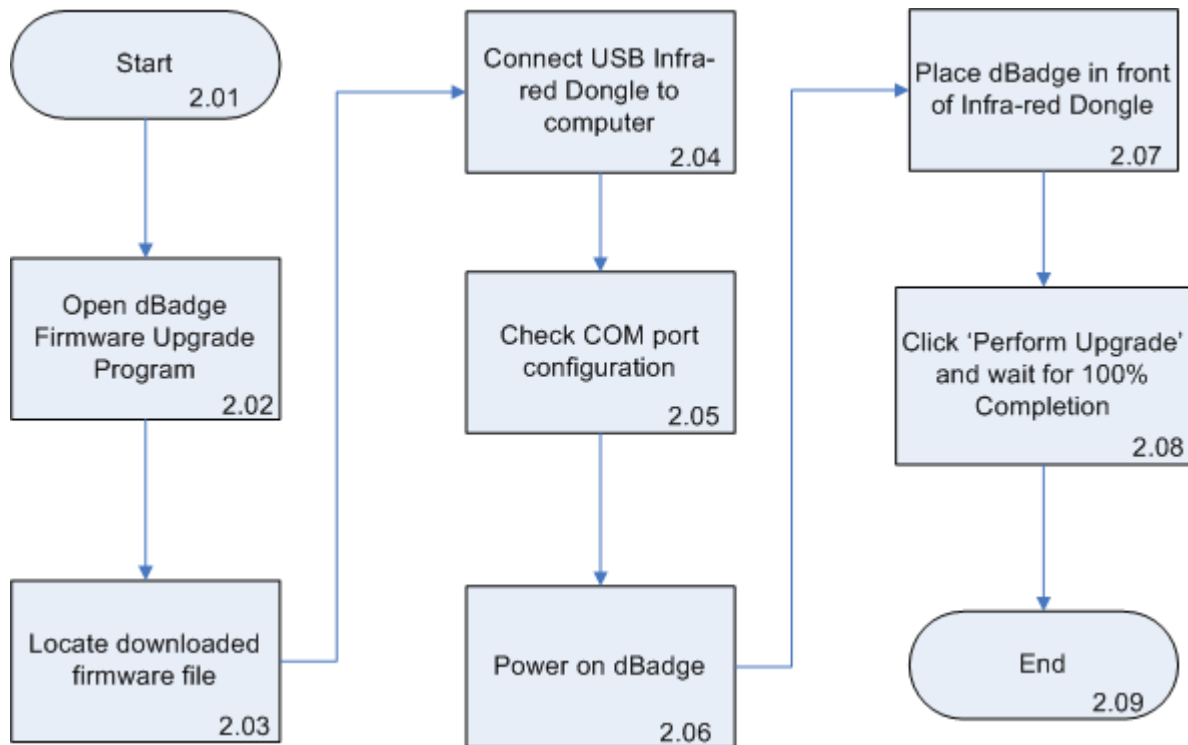


The latest firmware revision can be downloaded from the Casella website within the relevant product support page. If a new firmware version is available, a technical notification will be released by Casella Product Support. The up to date revision will then be uploaded to the Casella website for download.

Firmware Upgrade Method

The firmware upgrade method for the Casella 35x dBadge is a simple procedure and is summarised below in **Figure 2**. A detailed, step by step procedure is outlined below which has been numbered so that you can reference the document number and step number when contacting Casella Product Support.

Figure 2

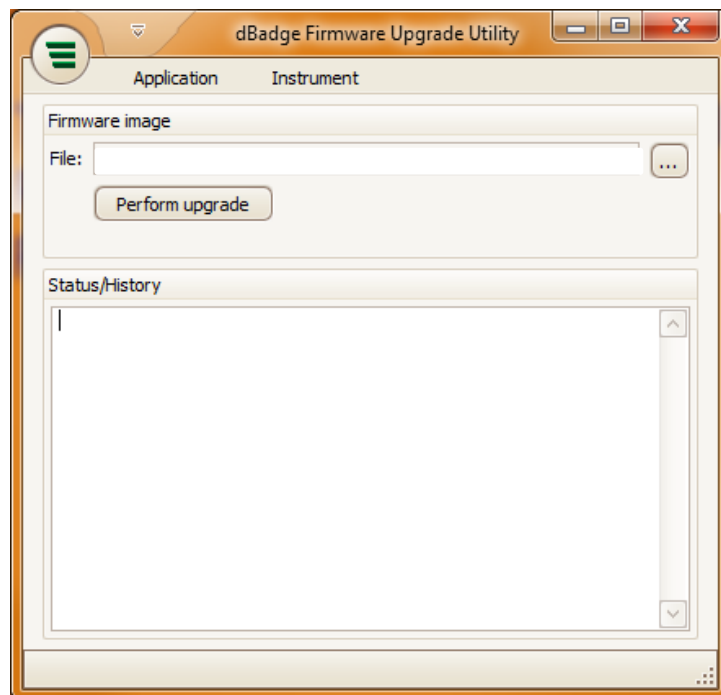


N.B Updating the firmware on your Casella 35x dBadge may erase all the information stored in the unit. Please make sure you have backed up your data before attempting this procedure.

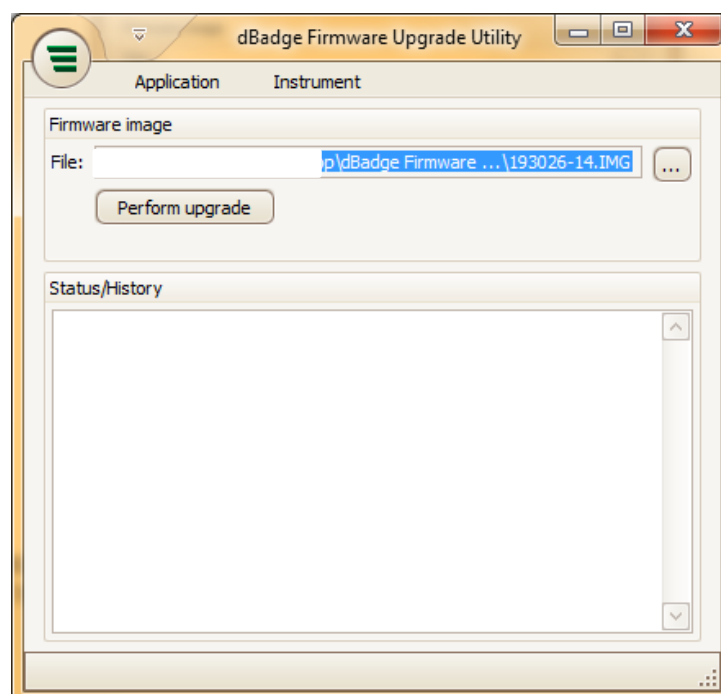
Detailed Firmware Update Procedure

1. Download the Casella 35x dBadge firmware from the Casella website and save to an accessible location.

2. Double click on the dBadge Firmware Upgrade Program desktop icon to open the program. The following window will appear:

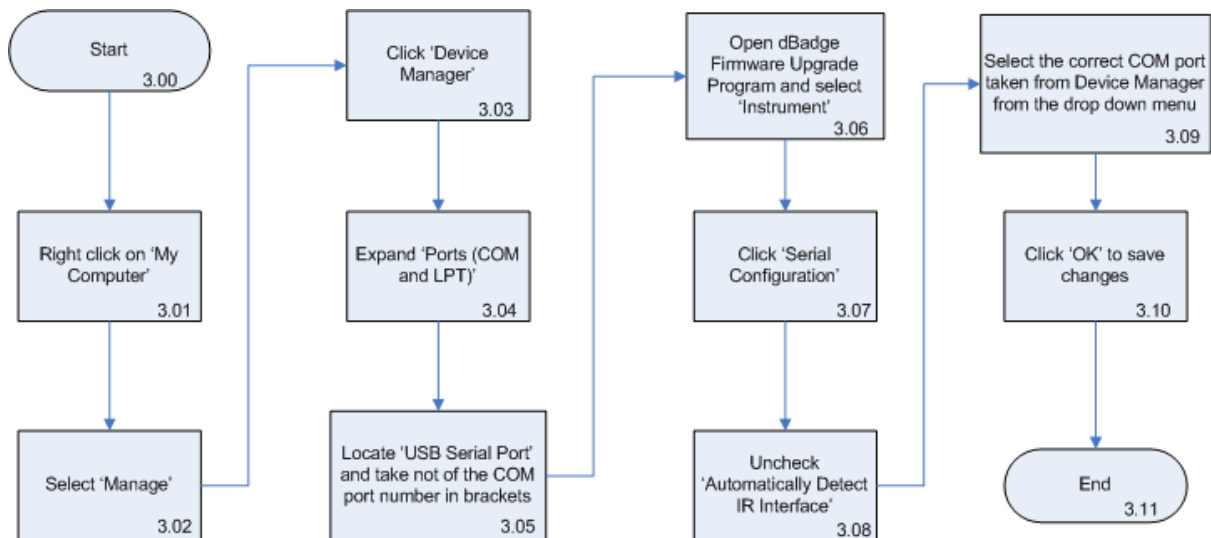


3. Using the [...] button browse to the location chosen in step 1 and 'open' the firmware file. The File dialog box will display the chosen location once selected.



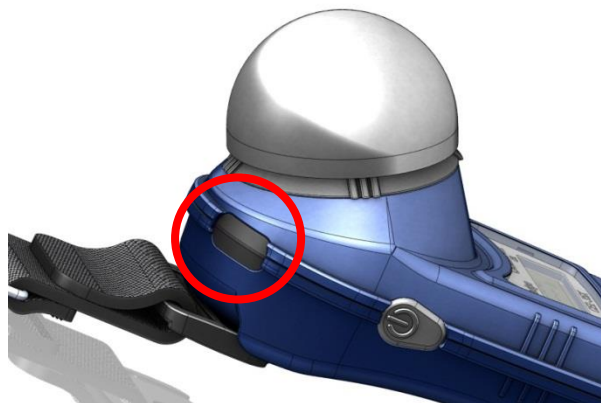
4. Connect the USB Infra-red Dongle to a USB port on your PC.
5. The correct COM port will need to be selected for the program to work with the USB Infra-red dongle. This process is outlined in **Figure 3**.

Figure 3



6. Power on the Casella 35x dBadge. Once the unit has booted, place the instrument's Infra-red receiver (shown in **Figure 4**) in front of the USB Infra-red Dongle. A blue light on the Casella 35x dBadge will confirm a connection to the computer.

Figure 4



7. Click 'Perform Upgrade' within the dBadge Firmware Upgrade Program. The LEDs on the Casella 35x dBadge will flash red and blue and a progress bar will appear at the bottom of the dBadge Firmware Upgrade Program window.
8. When the progress bar shows 100% complete, reboot the Casella 35x dBadge.
9. The update is now complete.

Description	Current Issue	Software Number
Casella 35x dBadge Firmware History	14	026A-14-00

Issue Number	Fixes and Additions	Release Date
14	<ul style="list-style-type: none"> - Up issued version 1.13 to 1.14 in line with changes to B&K models 	08/05/2012
13	<ul style="list-style-type: none"> - C Peak run counts added for 135, 137 and 140 dB - Preset mode added to configuration menu. Ability to set preset mode through IR communications also added - Auto lock functionality added – this can be set via IR communication or through configuration menu - Bug corrected in PRO mode whereby Q5 LAVG (threshold 80) would not display correctly after the meter was switched on and off - Bug corrected in PRO mode whereby the right hand key could corrupt the display when Auto-Scroll was off and the LCD was locked - Bug corrected in PRO mode whereby the memory and battery level screen would not update when scroll LCD was disabled - Bug fixed which caused the battery icon to display the wrong amount of battery charge when the screen was locked 	05/08/2011
11	<ul style="list-style-type: none"> - Bug fixed that caused a CEL – 350 to change model type to 350 Lite when upgrading from v1.08 to 1.09 	01/03/2011

<p>10</p>	<ul style="list-style-type: none"> - New model variant, 350L, added 	<p>02/11/2010</p>
<p>09</p>	<ul style="list-style-type: none"> - CEL – 35x model added - Lock/unlock commands can now be performed via IR communications - Model types can now be set by IR communications 	<p>16/10/2009</p>
<p>07</p>	<ul style="list-style-type: none"> - CEL – 352 model added which adds LCEq and LAC-A on results screen 	<p>15/02/2008</p>
<p>05</p>	<ul style="list-style-type: none"> - Added Projected Dose% to results displayed for last run completed – this is not stored - Added Portuguese language - Added I.S version to the 350 model 	<p>03/04/2007</p>
<p>04</p>	<ul style="list-style-type: none"> - Bug fixed which caused some dates to be displayed incorrectly on power up screen - Overload value increased by 0.2 dB - Calibration threshold increased from 6 to 12dB 	<p>09/10/2006</p>

This is a controlled document and is not to be amended by anyone other than Casella Product Support. Should you have any feedback or wish for any amendment to be made to this document, please contact Casella Product Support via the contact details below providing the document number and change request details.

Casella

Regent House,
Wolseley Road,
Kempston,
Bedford,
United Kingdom,
MK42 7JY

Phone: +44 (0)1234 844138

Help Desk: helpdesk.casellasolutions.com

Website: www.casellasolutions.com